

# 37 th. EGER Grand Prix – 25.10 - 26.10.2025

## Bulletin 1

### Organizer

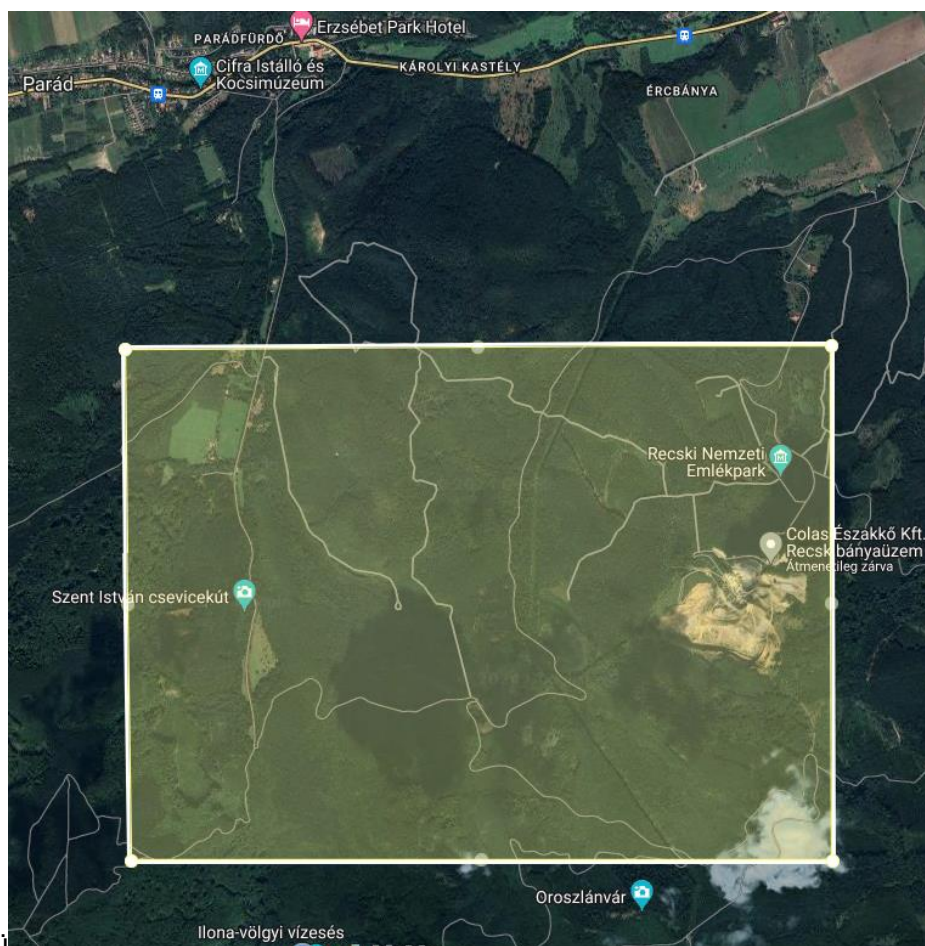
Egri Spartacus Oroenteering SportClub  
3300 Eger, Zellervár u. 3.  
[www.egrispartacus.hu](http://www.egrispartacus.hu) [facebook](#)



### The Event

	1st. day	2nd.day
President	Attila Blézer	
Course setting	Tamás Kiss Mikes	
Controller	István Marczis	Gyula Erdélyi
Event form	2 days, individual, long distance	
Location	Mátra mountain, Parádfürdő village, Ilona-valley	
Terrain	Medium height range terrain. The area has characteristic hill-sides, somewhere significant difference in level. The undergrowth is rarely denser which makes the run slower	
Map	corrected in 2025, it is based on LIDAR size: A/3 and A/4, scale: 1:10000/5 m, 1:7500/5 m, printed on pretex paper - waterproof	
Planned „0” times	11:00 am	10:00 am

### Restricted area



All kinds of orienteering activities are prohibited in the area shown on the map until the day of the competition. Those who break the ban may be excluded from the competition based on the MTF SZ competition rules!

### Categories

M/W10D (marked), 10DK (with parent), 12D (marked), 12C, 14B, 14C, 16B, 18B, 15-18C, 20A, 21A,B,Br (Br=short),C, 35A,Br (Br=short), 40A, 45A, 50A, 55A, 60A, 65A, 70A, 75A, 80A, Open beginner, Open technical. In case of having less than 5 participants classes may be merged.

### Entry options

Online - <https://www.e-nevezes.hu/hu/esemeny/show/970>

### Entry fees

**With of Hungarian Orienteering Federation licence:**

	till 08.10.2025	09.10 - 15.10.2025	after 16.10.2025 and at the event
M/W 10-18	3.200 HUF/race	extra fee +500 HUF/race	extra fee +1.000 HUF/race
M/W 20-55	3.800 HUF/race		
M/W 60-80	3.000 HUF/race		
Open categories	2.800 HUF/race		

**Without of Hungarian Orienteering Federation licence:**

Competitors who do not have a MTF SZ competition license must pay HUF 1,100/day competition license fee in addition to the entry fee, with the exception of the Open beginner, Open technical and M/WN10D, 10DK, 12D categories.

### Payment, invoicing

- by bankcard in the entry system
- by bank transfer

Address: Egri Spartacus SE H-3300 Eger, Zellervár u.3

Bank: K&H Bank Zrt. Swift/BIC: OKHBHUHB

IBAN: HU11 1040 3507 0000 3639 0000 0003

- in cash at the event

The invoices will be issued after the competition and will be sent to the email address given in the entry system. We can only issue an invoice in the name of the payer. Entry requires payment!

### Sportident

The competition is organized with SI system. Competitors having own SI cards are kindly requested to write the numbers of their cards on the entry forms! Only SI card 5 can be rented at the competition, there is no rental fee, but in case of loss we will charge the price of the card.

The AIR + mode will be turned on.

#### SI chip rental

- M/W 10-12-14 - free
- M/W 16-80 and Open - 500 HUF/race

### Child competition

On both days, we will organize a child competition at the finish area.

Kids can enter the child competition at the finish and it is free of charge. All the participants of the child competition will get a prize/present.

## Accommodation

Accommodation should be arranged individually, some have been suggested:

Student Hostels in Eger

[Sárvári Junior Hotel Eger, Pozsonyi u. 4-6.](#)

[Pozsonyi Ifjúsági és Diákszálló Eger, Mátyás király u. 76.](#)

[Wigner Kollégium Eger, II. Rákóczi F. u. 2.](#)

## Prizes

The first three runners of each class will be awarded a medal and prize, based on the total result of the 2 competition races, we also award the winners with gift.

We challenge all competitors in the M/W10D, 10DK categories to the podium.

## Others

- Everyone starts the competition at their own risk.
- The participants of the competition (competitors, spectators, attendants) agree that pictures and videos can be made of them, which pictures and videos the organizers have and can pass them on to third parties (press, internet).
- All competitors who started should check in at the finish area.
- Sales of orienteering and other sports equipment as well as any sales activities are only allowed with the agreement and permission of the organizers.
- If the competition committee is forced to cancel the competition due to force majeure, we are unable to refund the entry fee, but upon request, we will include it in the entry fee of one of our next competitions.

